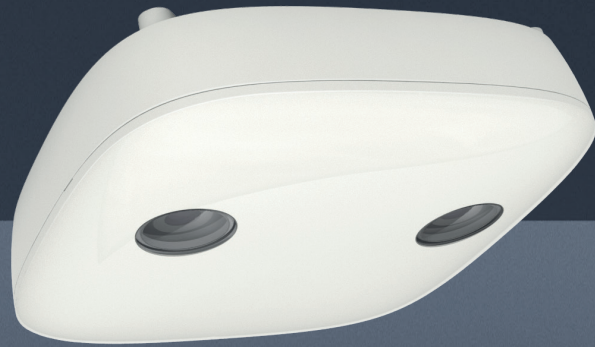


ADVANCED PEOPLE SENSOR APS-90E



The benchmark for 3D people sensing

Awarded with the IF Design Award 2017

EASY INSTALLATION AND CONFIGURATION

- Accessories for simple surface, flush or wall mount
- Suitable for any lighting condition
- Automatic detection of installation height
- Local product installation / remote configuration

MAXIMUM ACCURACY IN ALL APPLICATIONS

- Monitored area up to 20m² (220 sq ft) / up to 10 counting lines
- Coverage of multiple counting points with a single device
- Accuracy of at least 98% even in crowded areas

OBJECT CLASSIFICATION

- Separate counting results for adults and children
- Classification of non-human objects such as shopping carts
- Suppression of false counts due to non-person objects

ZONE MONITORING

- Up to 8 individual zones of polygonal shape
- Fill level, dwell time and waiting time per zone
- Suitable for automatic queue and cash register management

WIRELESS SERVICES

- Bluetooth and Wi-Fi device scanning
- Wireless access to the web-based configuration tool
- Wireless data transmission

RELIABLE DATA

- Synchronous recording of video and motion data
- Proprietary software to view video and motion data
- Offline verification of counting accuracy and behavioral data

TECHNICAL DATA

Operating Voltage	Power-over-Ethernet (PD class 0) 24V DC (I0-version)
Power consumption	< 8W
Operating temperature	0°C ... +55°C (32°F ... 130°F)
Storage temperature	-40°C ... +85°C (-40°F ... +185°F)
Ingress protection	IP30 (DIN IEC 60529)
Installation height	2.00 m ... 3.50 m (6.5 ft ... 12 ft)
Monitored area	Up to 4 m x 5 m (13 ft x 17 ft) (depends on installation height)
Dimensions	160 mm x 160 mm x 42 mm Flush Mount: Ø 143 mm -150 mm 6.3 in x 6.3 in x 1.7 in Flush Mount: Ø 5.6 in -5.9 in
Weight	400 g (14 oz)
Housing	Aluminum & Plastics
Required illuminance	3 Lux
EMC	CE, FCC
Reliability	MTBF 500,000 h, Useful life > 10 years

INTERFACES

Ethernet	1000BaseT, PoE, RJ45 socket
Communication protocols	SOAP/XML, HTTP, FTP, REST other IP-based services and custom protocols possible
USB port	USB 2.0, type host
Digital inputs / outputs	3 inputs / 3 outputs (I0-version)
Setup / service	Integrated web interface
On-board data storage	8 GB