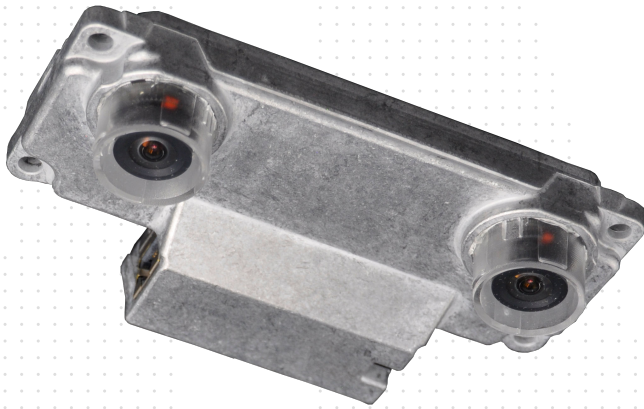


## Advanced People Sensor

# APS-B

013.936-007



### MULTI-DIRECTIONAL PASSENGER COUNTING

- Precise passenger counting even in crowded conditions with an accuracy up to 99 %
- Can meet VDV 457-2 accuracy requirements
- Up to 10 individual counting lines are possible per device
- Capture separate figures for interior doors, left and right side or upper and lower deck, without the need of additional units
- Detection and exclusion of U-turns

### OCCUPANCY MONITORING IN AN AREA

- Real-time passenger detection to determine the occupancy of individual areas for optimized capacity planning

### OBJECT CLASSIFICATION

- Separate counting results for adults and children as a standard feature
- Additional option: Detection of bicycles and wheelchairs

### VIDEO RECORDING FOR COUNT VERIFICATION

- Optional recording of color video files alongside caption of measurement results
- Option to pixelize video files depending on installation height
- Recording can be triggered via digital inputs (door contact)
- Additional privacy option: Individuals are not recognizable on videos

### REAL-TIME DATA

- Very short latency time of 50 ms
- Start-stop detection using the integrated accelerometer
- Suitable for solutions that require an instant event-triggered activity, e. g. the reopening of a door if a passenger approaches

### EASY SETUP AND COMMISSIONING

- Automatic determination of mounting angles
- Automatic determination of the floor profile and ceiling height
- Intuitive and straight-forward setup of all other parameters via the web user interface
- Immediate full performance, no calibration required
- Easy demonstration to the end user using color videos with synchronized data records

### TECHNICAL DATA

Operating voltage	12 V DC to 24 V DC (nom.) Protected against short-circuit and inverse polarity
Power consumption	4 W
Operating temperature	ISO 16750-4 -15 °C to +70 °C (+5 °F to +158 °F)
Storage temperature	ISO 16750-4 -40 °C to +85 °C (-40 °F to +185 °F)
Ingress protection	IP30
EMC	UN ECE R 10 EN 50498
Shock and vibration	ISO 16750-3
Coverage	<b>Ceiling height:</b> 2.00 m to 4.00 m (6.6 ft to 13.1 ft) <b>Coverable door width:</b> 1.60 m to 5.60 m (5.2 ft to 18.4 ft) depends on installation height
Dimensions	136 mm x 79 mm x 31 mm (5.3 in x 3.1 in x 1.2 in)
Weight	250 g (8.8 oz)
Housing	Aluminum and stainless steel
Light sensitivity	3 Lux to 300,000 Lux High Dynamic Range (HDR)
Failure rate	< 2,000 FIT (= MTBF 500.000 h)
Type approvals	ECE type approval for road vehicles CE Declaration of Conformity

### INTERFACES

Ethernet	10/100/1,000 Mbit/s, full duplex
Communication protocols	TCP, UDP, FTP, HTTP, HTTPS, SOAP, VDV-300 (IBIS), VDV-301 (IBIS-IP), ITxPT, REST API, SSH
Inputs/outputs	2 programmable digital inputs, 1 programmable digital output
Setup/service	Integrated web interface

### ACCESSORIES

Generic mounting kits for surface mount, flush mount and variable tilt angles are available from stock

### SETUP AND SERVICE

- ✓ Secured by multilevel user and rights management
- ✓ Customizable WebGUI (logo, colors)
- ✓ Automatic setup of floor profile and tilt angles
- ✓ Remote maintenance and updates via PS.Platform
- ✓ GDPR - Data protection by design and default ensured
- ✓ High level of privacy with the privacy mode